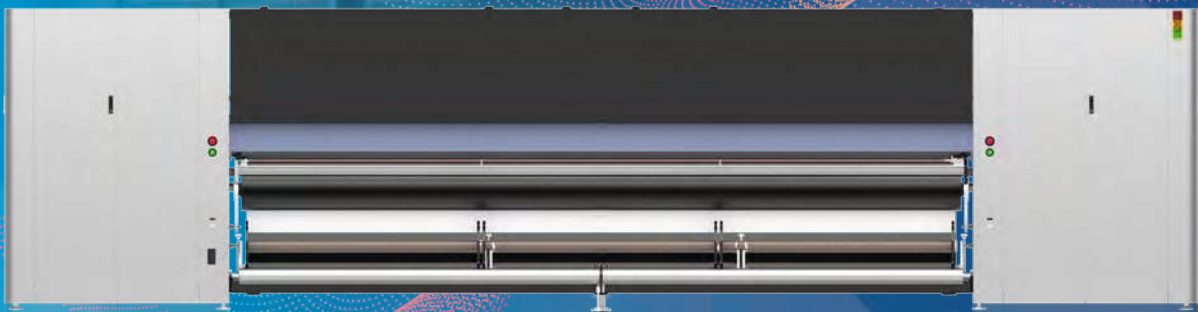




The future of image is being now
It's time for you to act
As long as you dare to imagine
JHF R9000
Give you strength beyond your
imagination

R9000 Ultra-wide Industrial Printer



R9000 independently developed by JHF is another masterpiece in the field of ultra wide industrial printers, which integrates intelligence, speed, accuracy and stability. R9000 is equipped with a double row ten color output system to realize photo-realistic output. Wide format 5m and multi-rolls printing kit can effectively improves production efficiency and easily cope with various application scenarios, all in one design to save the cost. Meanwhile, R9000 introduces industrial PLC and automatic integrated operation, cancels operation buttons on the machine body, and the printing task control can be completed on the console. The whole machine does not need personnel to guard, realizing unmanned intelligent printing in the whole process. R9000 will re-establish professional and high-quality product standards and promote ads market to a new height.

Photo-realistic double 10 colors



Bolder and imaginative colors

With 20 heads alignment, a variety of application schemes, optional printing on full color, color-white-color and white-color-varnish, which make the production efficient and convenient, while fully meeting the color requirements.

Optional ultra wide with style

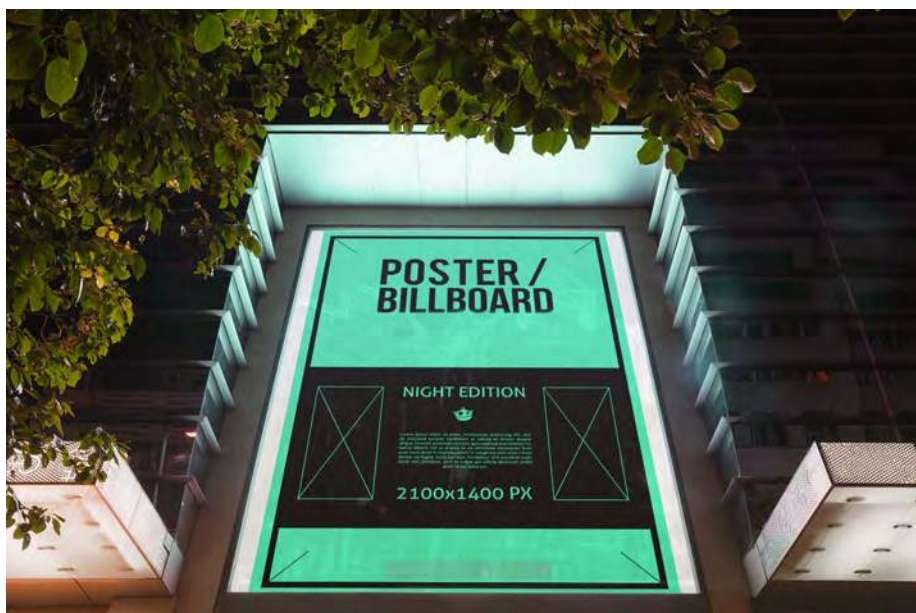


High quality output

0.5μ high-precision metal encoder strip and maglev system perfectly ensures the ultra-high printing accuracy when printing at high speed. It benefits to improve production efficiency and output quality.

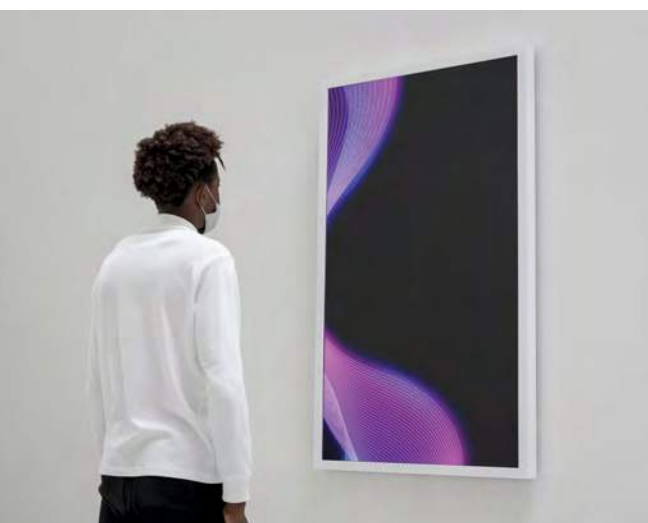
Superior expressive force

Configured with double row ten color, it can easily meet customers' high-quality printing requirements for advertising pictures and large billboards.



Instantaneous capacity

5m ultra wide printing, flexible production mode can realize the simultaneous printing of three rolls of 1.5m wide materials, which can greatly improve the instant production capacity and help customers get ahead in the market competition.



Learn more about R9000

Core technology



Superior performance operation

- The flexible production mode can realize the synchronous printing of three rolls of 1.5m wide materials.
- The customized feeding system and the national patented roller structure make the printing materials run more accurately and smoothly, not easy to deviate, and more suitable for high-speed printing in large quantities.
- The ink temperature control system independently developed greatly improves the smoothness of ink and the printing stability.
- The negative pressure platform managed by frequency conversion to ensure the stability of the negative pressure and effectively prevent the wrinkle of the feeding.

Ultra high output quality

- 5m wide format, double row ten color output system, all succeed in photo-realistic output.
- 0.5μ high-precision metal encoder strip and maglev system perfectly ensures high printing accuracy during high-speed printing.
- With 20 heads alignment, a variety of application schemes, optional full-color, color white color and white color varnish.
- By a highly efficient and fully automatic drying system and LED curing, the image can be printed and dried instantly and featured with waterproof, sunproof and scratch resistant, which is more energy-saving and environmental friendly, and has higher definition, brightness and color saturation.

Intelligent module

- R9000 is a highly intelligent industrial digital equipment with big potential for further system upgrading, effectively saving labor costs.
- Double sided intelligent printing function, the printing position can be found more accurately by scanning through the camera.
- Intelligent cutting function, which can synchronize to cut the picture vertically into 2-3 parts during the machine working.
- Automatic boundary detective function, multi roll material can realize intelligent typesetting and synchronous printing to increase the production capacity of the machine.
- Independently developed brand new printhead lifting and protection system, combined with automatic height measurement technology, which greatly reduces the deviation and error caused by manual operation, and the anti-collision induction system better protects the heads and UV lamp.
- Independently developed stable high-precision electronic negative pressure system to ensure stable and smooth ink supply; also equipped with negative pressure protection and feedback, which can prevent ink from back flowing.
- Radiation protection function: the front guardrail is covered with dark gray Plexiglas, which can 100% prevent UV radiation to the human body. Meanwhile, it can clearly observe carriage motion, and realize the convenient operation of one key lifting.



R9000 Industrial Printer

Technical Specifications

| | | | |
|-------------------------|--|--------------|----------|
| Max. width | 5000mm | | |
| Print head | Kyocera single channel, 3pl | | |
| Head alignment | 2 rows, 20 heads | | |
| Printing mode | High speed mode | 300×1800dpi | 225 m²/h |
| | Production mode | 600×1200dpi | 150 m²/h |
| | Fine mode | 600×1800dpi | 100 m²/h |
| | Ultra fine mode | 1200×1200dpi | 80 m²/h |
| Media type | Lightbox PVC, PET film, backlit & frontlit banner, PE film, etc. | | |
| Ink type | UV ink | | |
| Ink color | C, M, Y, K, Lc, Lm, Ly, Lk, O, B, W, V (optional) | | |
| Control software | JHF Printer V4.1 | | |
| Working environment | Temp.18-28°C, RH 30-70% | | |
| Air pressure parameters | ≥8kg/ cm² | | |
| Connection interface | PCIE | | |
| Power requirement | 3 phase, 380V, 25KW | | |
| Machine size | L 8500mm*W 1850mm*H 2150mm | | |
| Machine weight | 8000KG | | |



For further information, please contact local JHF partner. Website: www.jhfprinter.com Specifications are subject to change without notice. All rights reserved.



JHF TECHNOLOGY GROUP CO.,LTD

Add 1: DMI Industrial Park, No.3000, Meili East Road, Huaiyin District, Jinan, Shandong, P.R.China.

Add 2: No.8-2, Zonger Road, Yangzhen Industrial Zone, Shunyi District, Beijing101309, P.R. China.

+86-10-65776767

jhf@jhfprinter.com

www.jhfprinter.com

JHF